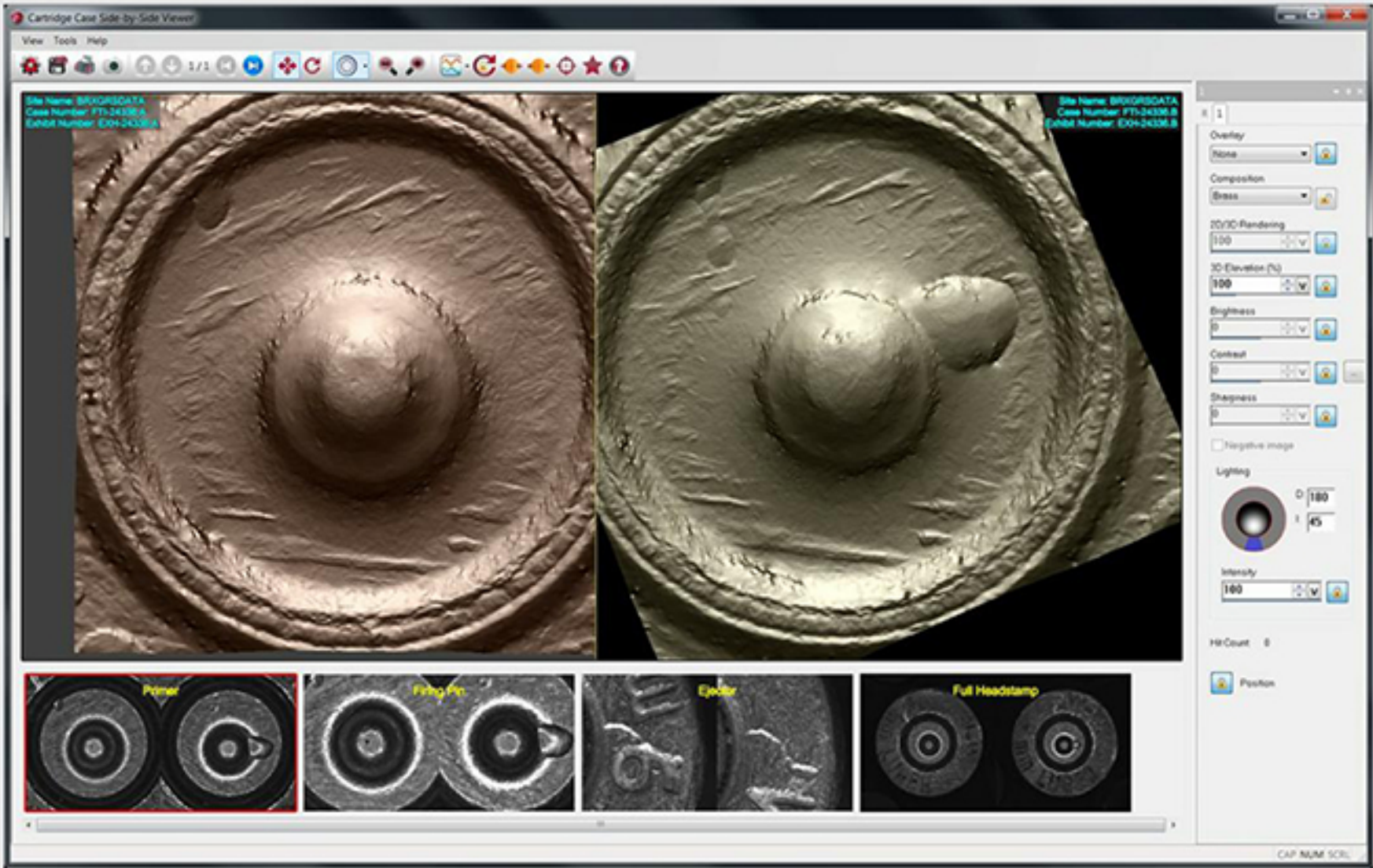


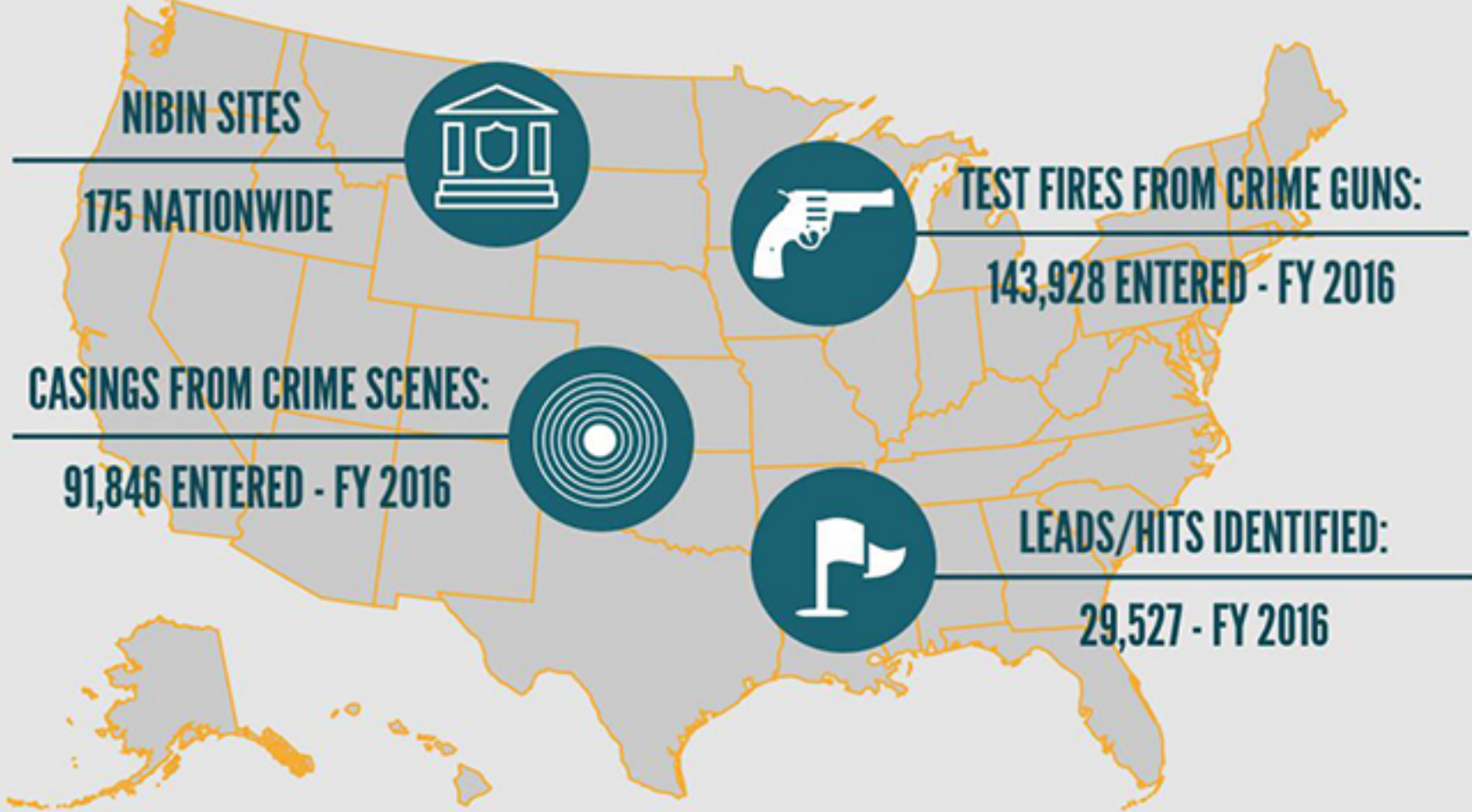


NIBIN evaluates ballistic evidence to identify shooters and can connect a gun to multiple crime scenes.

#1 DID YOU KNOW?
When a gun is fired, it leaves unique marks on the ammunition casings. Just like a person's fingerprints, no two firearms leave the same marks on a casing.



#2 DID YOU KNOW?
Today's technology takes a 3D image of ballistic evidence and identifies possible matches to evidence from other violent crime scenes, allowing law enforcement to connect separate shooting incidents and help identify those responsible.



#3 DID YOU KNOW?
The network is a system of 175 sites used by federal, state and local law enforcement. NIBIN is the most advanced forensic tool available to law enforcement to identify criminals who repetitively use guns to commit crimes.

ATF funds the acquisition and maintenance of approximately 68 percent of all NIBIN equipment.

Learn more about ATF's NIBIN program at:
www.atf.gov/firearms/national-integrated-ballistic-information-network-nibin



www.atf.gov | Twitter: @ATFHQ | Instagram: @ATFHQ | Facebook: facebook.com/HQATF

